

YEAR 2022

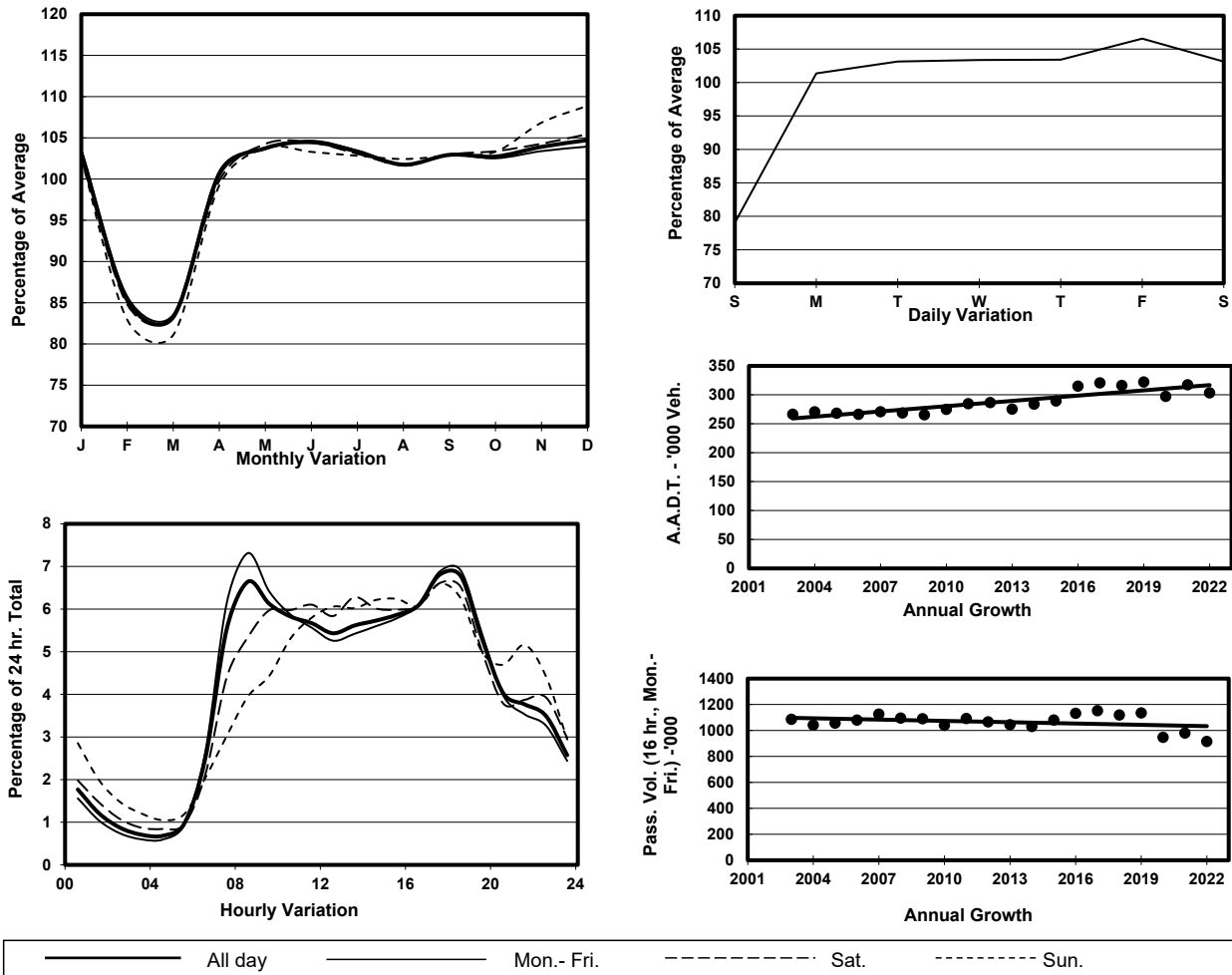
Location

Screenline S-S(East end of Tuen Mun & Yuen Long)

Stations on Cordon/Screenline

5012, 5016, 5029, 5042, 6207, 6208 and 6209

1. TRAFFIC FLOW VARIATION AND GROWTH



2. TRAFFIC CHARACTERISTICS (BY DIRECTION)

| Parameter | All - Day | Mon. - Fri. | Sat. | Sun. |
|--------------------------------------|-----------|-------------|-----------|-----------|
| EAST BOUND | | | | |
| A.A.D.T. | 151770 | 159130 | 158780 | 120110 |
| R 12 / 24 - % | 74.9 | 76.2 | 73.6 | 68.6 |
| R 16 / 24 - % | 89 | 89.6 | 88.3 | 86 |
| AM Peak Hour | 0800-0900 | 0800-0900 | 0900-1000 | 0900-1000 |
| One-way flow at AM peak hour | 12030 | 14050 | 11040 | 5970 |
| T - % (AM) | - | 18.7 | - | - |
| PM Peak Hour | 1700-1800 | 1700-1800 | 1700-1800 | 1700-1800 |
| One-way flow at PM peak hour | 9640 | 10220 | 9610 | 7580 |
| T - % (PM) | - | 16.4 | - | - |
| Prop.of commercial vehicles - 16 hr. | - | 19.3 | - | - |
| WEST BOUND | | | | |
| A.A.D.T. | 151490 | 158530 | 157810 | 122180 |
| R 12 / 24 - % | 69.3 | 70.3 | 68.7 | 63.4 |
| R 16 / 24 - % | 88.4 | 89.3 | 87.1 | 84.6 |
| AM Peak Hour | 0800-0900 | 0800-0900 | 0900-1000 | 0900-1000 |
| One-way flow at AM peak hour | 8130 | 9190 | 7870 | 4770 |
| T - % (AM) | - | 24 | - | - |
| PM Peak Hour | 1800-1900 | 1800-1900 | 1800-1900 | 1800-1900 |
| One-way flow at PM peak hour | 11680 | 12570 | 11340 | 8510 |
| T - % (PM) | - | 12.2 | - | - |
| Prop.of commercial vehicles - 16 hr. | - | 20 | - | - |

3. OTHER INFORMATION AND COMMENT

4. Vehicle classification and occupancy - Monday to Friday

| Time | | Class of vehicle | | | | | | | | | |
|------------------------|-----|------------------|----------------|------|---------------|------|------------|-------|----------------|---------|------|
| | | Motor Cycle | Private Car | Taxi | Private LB | PLB | Goods veh. | | Non Fr. Bus | Fr. Bus | |
| | | | | | | | Light | M & H | | SD | DD |
| 0700-0800 | Pro | 3.2 | 52.4 | 7.1 | 0.6 | 1.9 | 15.7 | 12.4 | 2.9 | 0.1 | 3.9 |
| | Ocp | 1.1 | 1.3 | 1.9 | 9.3 | 13.8 | 1.4 | 1.1 | 23.2 | 8.5 | 57.2 |
| 0800-0900 Peak Hour | Pro | 2.7 | 49.7 | 7.1 | 0.7 | 1.6 | 17.6 | 14.7 | 2.2 | 0.1 | 3.7 |
| | Ocp | 1.1 | 1.3 | 1.9 | 5.4 | 13.5 | 1.4 | 1.2 | 19.8 | 10.1 | 56.4 |
| 0900-1000 | Pro | 1.8 | 42.6 | 7.2 | 0.4 | 1.5 | 23.3 | 18.0 | 1.2 | 0.1 | 3.9 |
| | Ocp | 1.0 | 1.3 | 1.8 | 3.9 | 10.3 | 1.3 | 1.2 | 9.1 | 10.9 | 30.7 |
| 1000-1100 | Pro | 1.9 | 36.0 | 7.1 | 0.5 | 1.5 | 28.4 | 20.3 | 0.8 | 0.1 | 3.5 |
| | Ocp | 1.0 | 1.3 | 1.9 | 2.0 | 9.7 | 1.3 | 1.2 | 5.3 | 11.2 | 29.1 |
| 1100-1200 | Pro | 1.7 | 38.4 | 7.1 | 0.5 | 1.8 | 26.5 | 19.5 | 1.0 | 0.1 | 3.4 |
| | Ocp | 1.0 | 1.3 | 2.0 | 2.3 | 10.1 | 1.3 | 1.1 | 3.9 | 13.1 | 29.6 |
| 1200-1300 | Pro | 1.6 | 41.6 | 6.9 | 1.0 | 1.8 | 23.1 | 19.6 | 1.0 | 0.1 | 3.4 |
| | Ocp | 1.1 | 1.4 | 1.9 | 5.0 | 10.5 | 1.3 | 1.1 | 8.5 | 13.1 | 28.1 |
| 1300-1400 | Pro | 1.8 | 40.0 | 7.1 | 0.8 | 1.6 | 25.2 | 19.3 | 1.1 | 0.1 | 3.2 |
| | Ocp | 1.1 | 1.3 | 1.8 | 6.1 | 10.5 | 1.3 | 1.2 | 12.3 | 15.8 | 32.0 |
| 1400-1500 | Pro | 1.9 | 39.3 | 6.2 | 0.8 | 1.4 | 25.5 | 20.4 | 1.2 | 0.1 | 3.1 |
| | Ocp | 1.1 | 1.4 | 1.9 | 2.3 | 11.8 | 1.4 | 1.2 | 5.3 | 10.4 | 30.5 |
| 1500-1600 | Pro | 1.5 | 40.7 | 5.6 | 0.4 | 1.3 | 26.2 | 20.1 | 0.9 | 0.1 | 3.3 |
| | Ocp | 1.1 | 1.3 | 1.8 | 3.4 | 10.7 | 1.3 | 1.2 | 7.2 | 13.5 | 28.5 |
| 1600-1700 | Pro | 2.2 | 41.2 | 6.2 | 0.9 | 1.5 | 25.0 | 17.7 | 1.4 | 0.1 | 3.9 |
| | Ocp | 1.1 | 1.4 | 1.9 | 3.7 | 11.5 | 1.3 | 1.2 | 8.0 | 11.9 | 37.5 |
| 1700-1800 | Pro | 3.7 | 50.1 | 6.2 | 0.5 | 1.6 | 22.2 | 9.9 | 1.6 | 0.1 | 4.1 |
| | Ocp | 1.1 | 1.4 | 1.9 | 2.3 | 14.4 | 1.4 | 1.1 | 11.7 | 14.2 | 51.0 |
| 1800-1900 | Pro | 4.0 | 62.0 | 6.4 | 0.2 | 1.5 | 13.5 | 6.0 | 2.3 | 0.1 | 4.1 |
| | Ocp | 1.1 | 1.3 | 1.8 | 2.0 | 14.9 | 1.3 | 1.1 | 17.5 | 14.2 | 63.8 |
| 1900-2000 | Pro | 2.9 | 66.0 | 7.0 | 0.1 | 1.9 | 10.5 | 5.1 | 1.9 | 0.1 | 4.6 |
| | Ocp | 1.1 | 1.3 | 1.8 | 2.0 | 12.6 | 1.3 | 1.1 | 16.5 | 12.5 | 45.7 |
| 2000-2100 | Pro | 3.3 | 59.2 | 10.8 | 0.2 | 2.2 | 12.0 | 5.3 | 1.5 | 0.1 | 5.5 |
| | Ocp | 1.1 | 1.3 | 1.7 | 1.9 | 10.1 | 1.2 | 1.0 | 7.5 | 10.1 | 33.0 |
| 2100-2200 | Pro | 3.1 | 59.3 | 12.5 | 0.1 | 2.1 | 11.1 | 5.2 | 0.9 | 0.1 | 5.7 |
| | Ocp | 1.1 | 1.3 | 1.9 | 1.0 | 9.8 | 1.3 | 1.0 | 7.1 | 9.2 | 30.5 |
| 2200-2300 | Pro | 3.1 | 58.8 | 14.5 | 0.1 | 1.6 | 10.7 | 5.5 | 0.7 | 0.1 | 4.9 |
| | Ocp | 1.1 | 1.4 | 1.8 | 4.0 | 9.5 | 1.3 | 1.1 | 9.3 | 8.8 | 31.8 |
| 16 hours | Pro | 2.5 | 48.0 | 7.4 | 0.5 | 1.6 | 20.3 | 14.2 | 1.5 | 0.1 | 3.9 |
| | Ocp | 1.1 | 1.3 | 1.9 | 4.1 | 11.7 | 1.3 | 1.1 | 13.4 | 11.7 | 40.1 |

Legend: Pro. Proportion of vehicles in % (Sum may not add up to 100% due to figure rounding)*

Ocp. Average occupancy of vehicles including both driver and passengers*

M&H Medium and Heavy

* All traffic data are collected from combined bounds